

Magnetic catches - 2 in 1 series door stops

These models are used for all panels, gates, grilles and doors that need to be held securely despite vibrations, air currents and sudden accelerations. They can be found in public buildings, on railway or marine equipment, and on machine covers. The slightly flexible body allows misalignments to be corrected. The polar weights are treated against corrosion.



Series 1 door stop



Series 2 door stop



Counterplate


The Series 1 magnetic door stops consist of a magnetic circuit inserted in a neoprene body. They are wall-mounted, with a polyamide base screwed to the wall. The body is clipped onto this base, then held in place by a shrink ring.

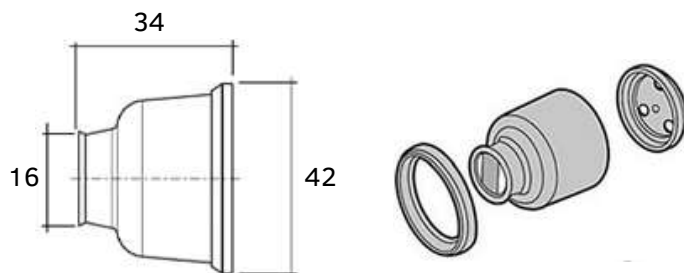
The Series 2 door stops consist of a magnetic circuit inserted in a PVC body. These stops are fixed to the floor, a polyamide plate is fixed to the wall and the body is slid into place. A shrink-fit collar secures the assembly.


Model	Reference	Color	Dimensions (mm)	Typical load-bearing capacity (kg)	With counter plate	Quantity per smallest packaging
Série 1 CF 16-1 W	0561001	Grey	Diam 42 x 34	10	Yes	1
	0561002	Brown				
Série 1 CF 22-1 W	0563006	Grey	Diam 54 x 43	20	Yes	1
	0563002	Brown				
	0563007	Black				
Série 1 CF 30-1 W	0565004	Grey	Diam 71,3 x 70	30	Yes	1
	0565005	Brown				
	0565006	Black				
Série 2 CF 22-2 W	0564001	Grey	45,5 x 50 x 38	20	Yes	1
	0564002	Brown				
	0564004	Black				
Série 2 CN 22-2 W*	0564052	Grey	45,5 x 50 x 38	30	Yes	1
	0564053	Brown				
Série 2 CF 22-2 V	0564010	Grey	45,5 x 50 x 38	20	Yes	1

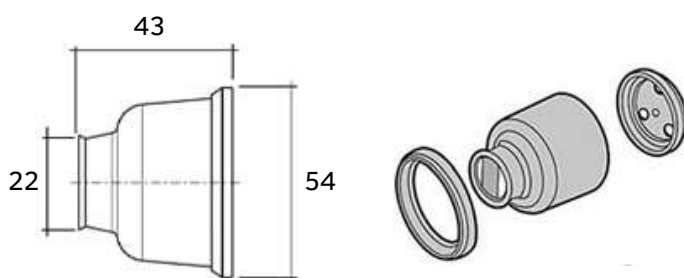
*Model fitted with neodymium magnets


MAGNETIC CATCHES - DOOR STOPS SERIES 1 & 2

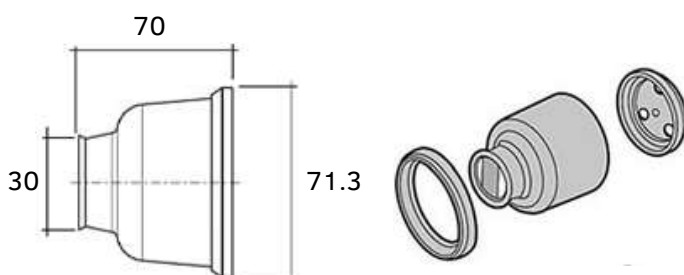
 **CF 16-1 W**



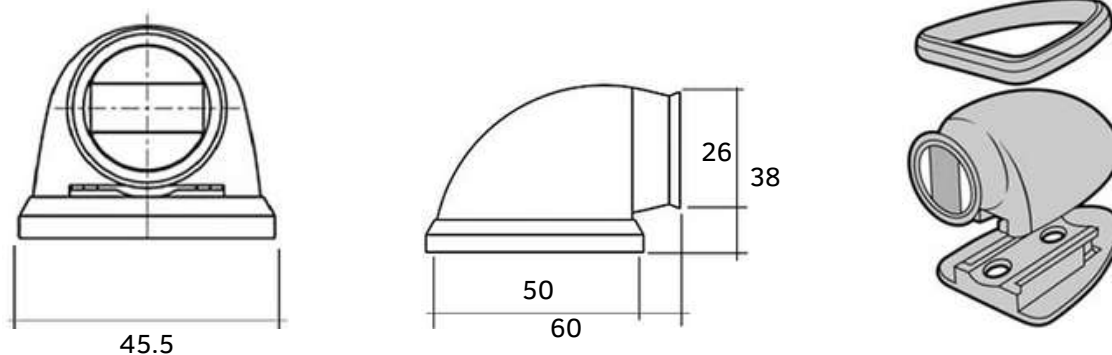
 **CF 22-1 W**



 **CF 30-1 W**



 **CF 22-2 W / CN 22-2 W / CF 22-2 V**



Magnetic catches - 2 in 1 series door stops

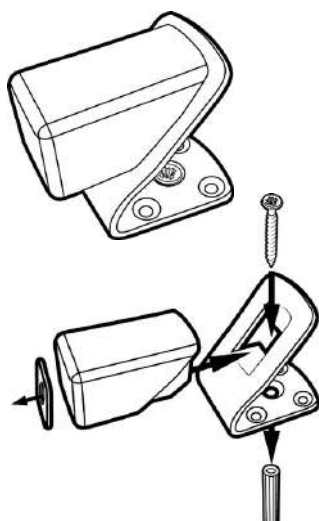
These models are used for all panels, gates, grilles and doors that need to be held securely despite vibrations, air currents and sudden accelerations. They can be found in public buildings, on railway or marine equipment, and on machine covers. The slightly flexible body allows misalignments to be corrected. The polar weights are treated against corrosion.



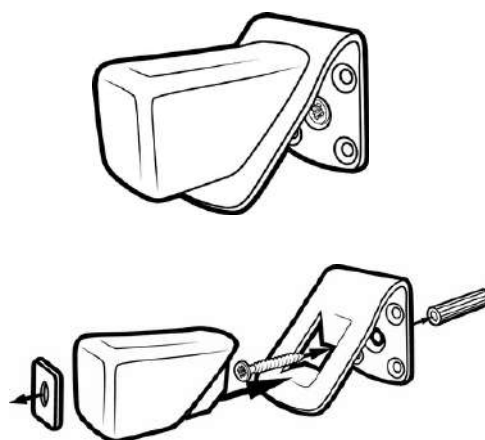
The door stops in the 2 in 1 series consist of a chrome-plated steel base into which a flexible santoprene stop is clipped, housing a magnetic system. Depending on the direction of assembly, the stop can be fixed either to the floor or the wall.

Model	Reference	Color	Typical load-bearing capacity (kg)	With counter plate	Quantity per smallest packaging
Série 2 en 1	0567001	Black	7	Yes	1
	0567002	White			
	0567003	Grey			

Floor fixing

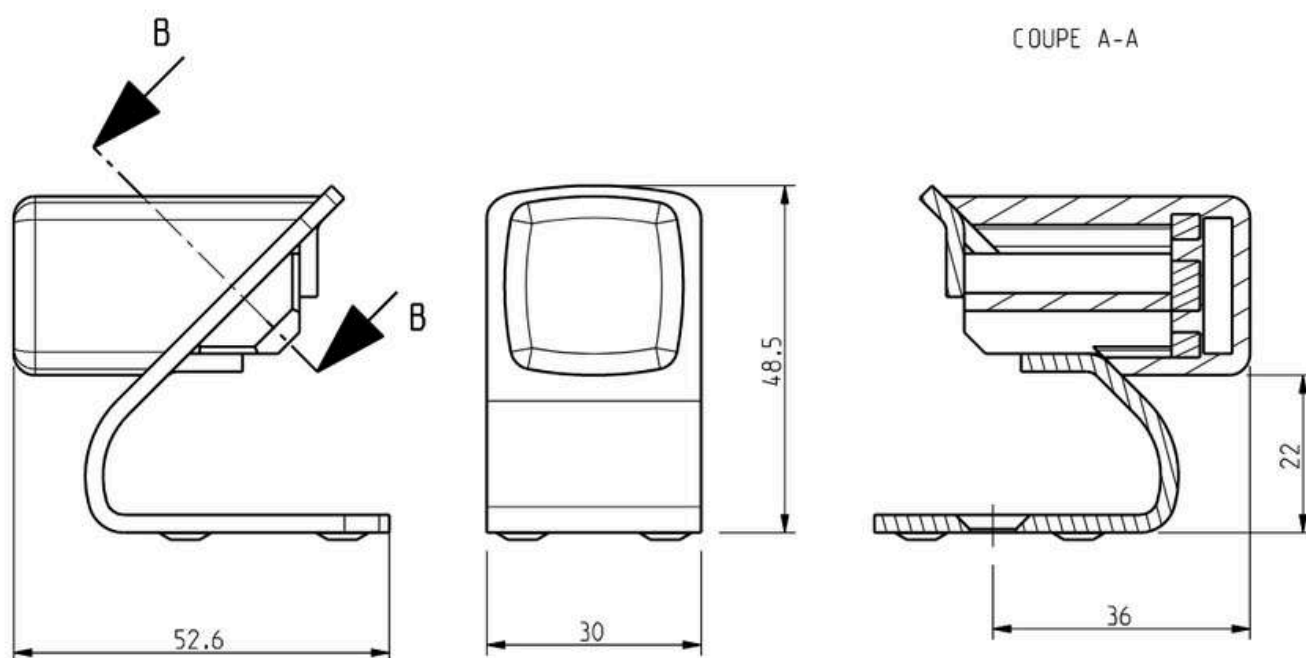


Wall fixing



MAGNETIC CATCHES - 2 IN 1 SERIES DOOR STOPS

2 in 1 door stop (floor fixing)



2 in 1 door stop (wall fixing)

